

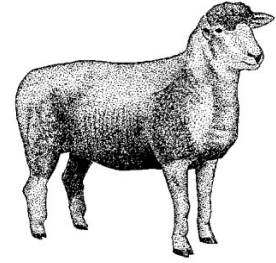
2011 WASHINGTON COUNTY FAIR OPEN SHEEP SHOW

Show Date: Saturday, September 17, 2011 (Immediately following Commercial Ewe Show)

MARKET LAMB SHOW MANAGER: Phil Blevins

COMMITTEE: Phil Blevins, Chairman
Kenneth Reynolds

Natalie Blevins
Gene Copenhaver



RULES FOR OPEN SHEEP SHOW

1. One entry per exhibitor per Class.
2. Purebred entries must have proof of registration.
3. Each exhibitor must show his/her own sheep or have permission from Sheep Committee at least one week before Show.
4. Sheep must be fitted before arriving at Fairgrounds and must be kept presentable during entire Fair.
5. Animals in pair classes must be owned by one exhibitor.

CLASSES – PUREBRED ONLY – Purebred classes will be based on the number of exhibitors/animals in any breed

1. Ram Lamb*
2. Yearling Ram*
3. Grand Champion and Reserve – ROSETTE
4. Ewe Lamb*
5. Pair of Ewe Lambs*
6. Yearling Ewe*
7. Pair of Yearling Ewe*
8. Grand Champion Ewe and Reserve – ROSETTE

PREMIUMS: FIRST - \$10.00; SECOND - \$8.00; THIRD - \$6.00; FOURTH - \$4.00

